



**RESIDENTIAL
AUTOMATIC SPRINKLERS
MODEL GL4248
MILLENNIUM™
FLUSH PENDENT**

DESCRIPTION AND OPERATION

The Globe Millennium™ Residential Flush Pendent Sprinkler is a low profile, aesthetically pleasing, flush mounted sprinkler that utilizes a 2.5mm frangible glass ampule as the thermosensitive element.

The combination of the 2.5mm frangible glass ampule and specially designed deflector make the Millennium™ Residential Sprinkler the ultimate in life safety and fire control. It has met the strict requirements of Underwriters Laboratories Inc. as described in the Standard for Residential Sprinklers for Fire Protection Service, UL 1626, and should be installed in accordance with the appropriate National Fire Protection Association Standard NFPA 13, 13D or 13R, and under the direction of the approving authorities having jurisdiction.

The heart of Globe's Millennium™ Sprinkler actuating assembly is a hermetically sealed frangible glass ampule that contains a precisely measured amount of fluid. When heat is absorbed, the liquid within the bulb expands increasing the internal pressure. At the prescribed temperature, when the internal pressure exceeds the strength of the glass ampule, the ampule ruptures. The levers that had been held in position by the bulb now collapse inward allowing the deflector and Teflon coated belleville washer seal to move downward to the full-operating position. This results in water discharge that is distributed in an approved pattern.



**RESIDENTIAL
FLUSH PENDENT**



**RESIDENTIAL
FLUSH PENDENT
WITH DROP ESCUTCHEON**

TECHNICAL DATA

- See reverse side for Approvals and Specifications.
- Temperature Rating - 155°F (68°C)
- Water Working Pressure Rating - 175 psi (12 Bars)
- Factory tested hydrostatically to 500 psi (34 Bars)
- Maximum low temperature glass bulb rating is -67°F (-55°C)
- Body - bronze • Deflector - bronze • Load Screw - brass
- Splitter - brass • Spring - nickel alloy • Seal - teflon
- Drop Pin - bronze • Lever Arm - bronze • Ceiling Cover - brass
- Dust Cover - nylon • Pin Cover - nylon
- Bulb - glass with alcohol based solution, 2.5mm size
- Escutcheon - steel

•SPRINKLER TEMPERATURE RATING/CLASSIFICATION and COLOR CODING

CLASSIFICATION	AVAILABLE SPRINKLER TEMPERATURES	BULB COLOR	N.F.P.A. MAXIMUM CEILING TEMPERATURE
ORDINARY	155°F 68°C	RED	100°F 38°C

RESIDENTIAL AUTOMATIC SPRINKLERS MODEL GL4248 MILLENNIUM™ FLUSH PENDENT

SPECIFICATIONS AND APPROVALS

SIN MODEL	NOMINAL "K" FACTOR	THREAD SIZE	LENGTH	FINISHES	cULus CE
GL4248	4.2 (58 metric)	1/2"NPT (15mm)	2 1/2" (6.4cm)	White Polyester	X

NOTE: METRIC CONVERSIONS ARE APPROXIMATE.

INSTALLATION DATA FOR FLAT AND SLOPED CEILINGS**

SIN MODEL	STYLE	TEMPERATURE 155°F (68°C)	MAX. AREA OF COVERAGE ³ Feet (Meters)	*MIN. PRESSURE P.S.I. (bars)	*MIN. FLOW G.P.M. (L/min.)	MIN. DISTANCE BETWEEN SPRINKLERS Feet (Meters)
GL4248	MILLENNIUM™ FLUSH STYLE PENDENT	X	12 (3.7) x 12 (3.7)	7.2 (.50)	11 (42)	9 (2.7)
		X	14 (4.3) x 14 (4.3)	7.2 (.50)	11 (42)	
		X	16 (4.9) x 16 (4.9)	10.0 (.69)	13 (49)	
		X	18 (5.5) x 18 (5.5)	17.2 (1.19)	17 (64)	
		X	20 (6.1) x 20 (6.1)	23.8 (1.64)	20 (76)	

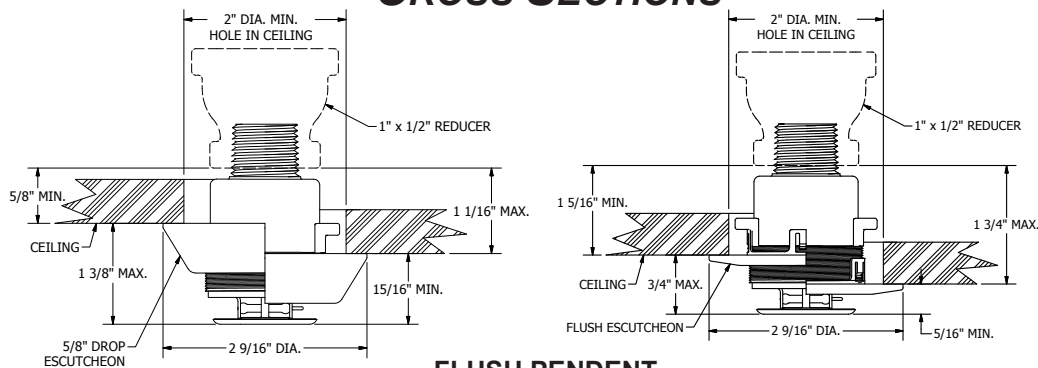
NOTE: METRIC CONVERSIONS ARE APPROXIMATE.

*WHEN THESE SPRINKLERS ARE USED IN NFPA 13 SYSTEMS, A 0.1 DESIGN DENSITY MINIMUM SHALL BE UTILIZED.

**REFER TO PAGE 2 OF GLOBE'S RESIDENTIAL SPRINKLER INSTALLATION GUIDE (BULLETIN R.S.I.G.) FOR NFPA 13D AND 13R REQUIREMENTS.

³FOR COVERAGE AREA DIMENSIONS LESS THAN OR BETWEEN THOSE INDICATED, USE THE MINIMUM REQUIRED FLOW FOR THE NEXT HIGHEST COVERAGE AREA FOR WHICH HYDRAULIC DESIGN CRITERIA ARE STATED.

CROSS SECTIONS



FLUSH PENDENT

ESCUTCHEON STYLE	ESCUTCHEON DIAMETER	WHITE PART #	BLACK PART #
FLUSH	2 9/16" DIA.	332332-W	332332-B
5/8" DROP		332483-W	332483-B

ORDERING INFORMATION

SPECIFY

- Quantity • Model Number • Style
- Orifice • Temperature • Finish desired
- Quantity - Millennium Wrenches - P/N 332334

GLOBE® PRODUCT WARRANTY

Globe agrees to repair or replace any of its own manufactured products found to be defective in material or workmanship for a period of one year from date of shipment.

For specific details of our warranty please refer to Price List Terms and Conditions of Sale (Our Price List).



4077 AIRPARK DRIVE, STANDISH, MICHIGAN 48658

989-846-4583

1-800-248-0278

FAX 989-846-9231

www.globesprinkler.com